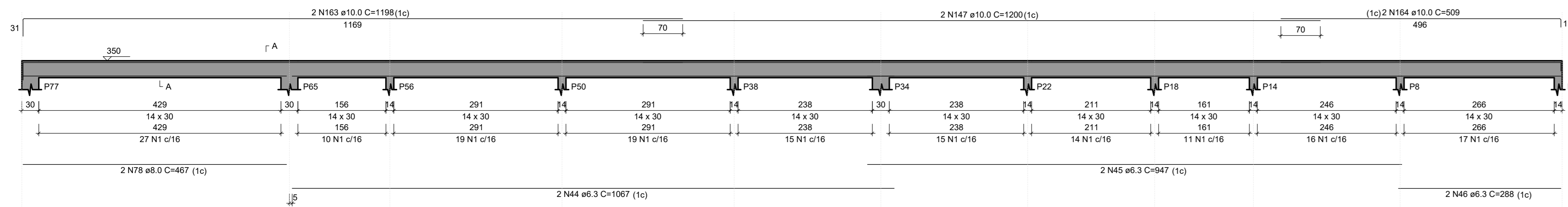


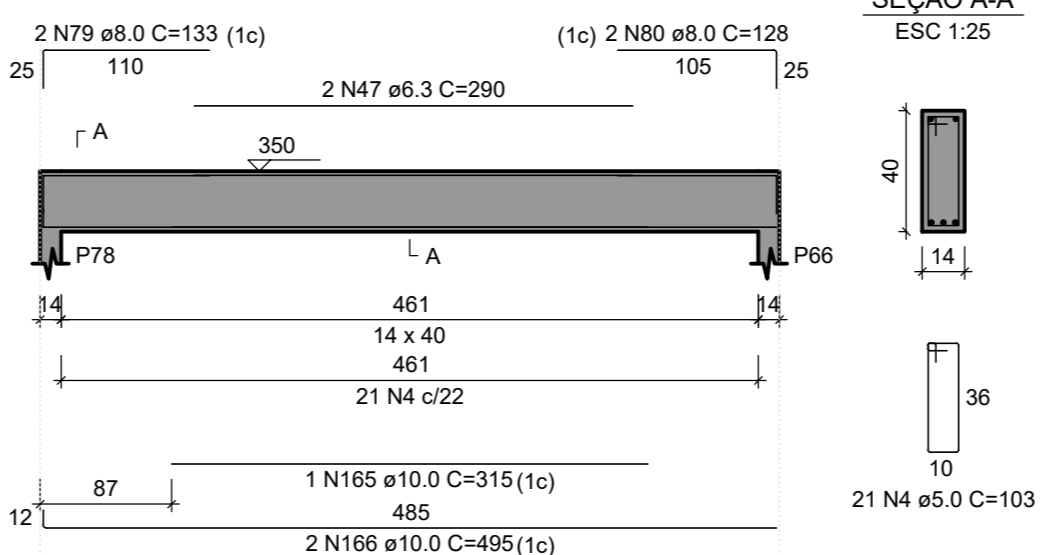
## V27

ESC 1:50



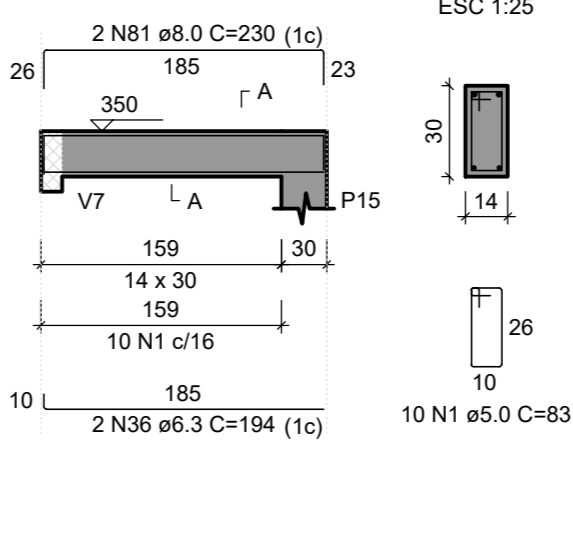
## V28

ESC 1:50



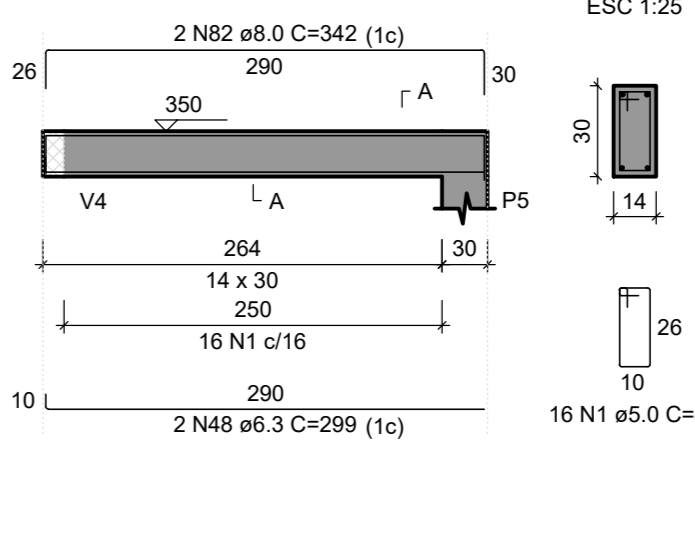
## V29

ESC 1:50



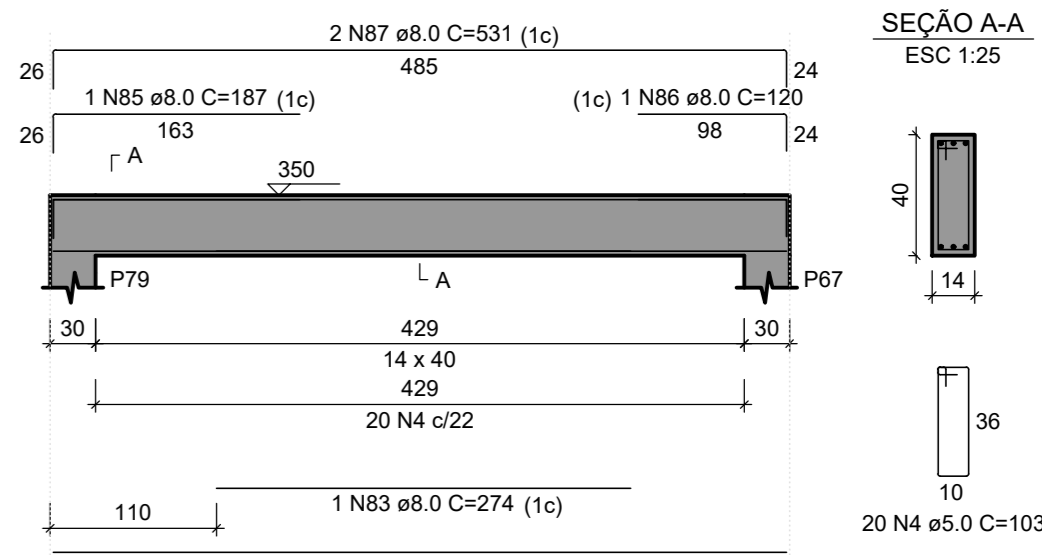
## V30

ESC 1:50



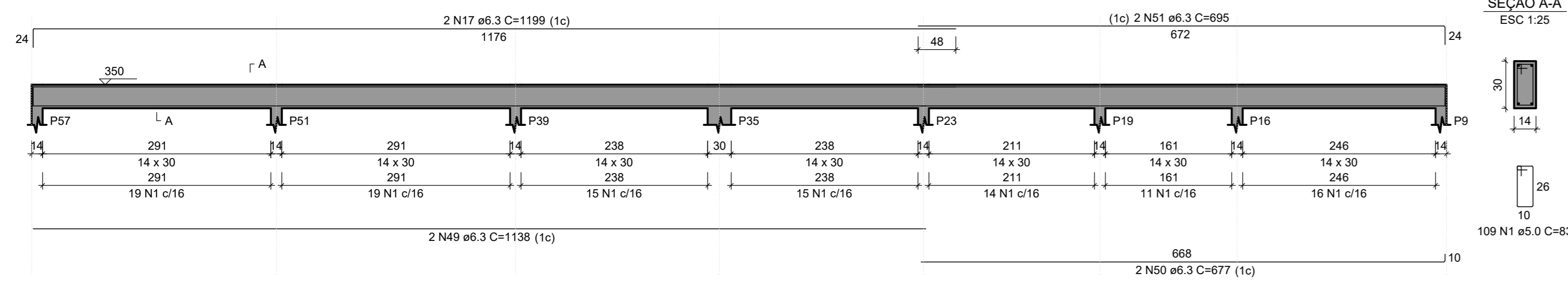
## V31

ESC 1:50



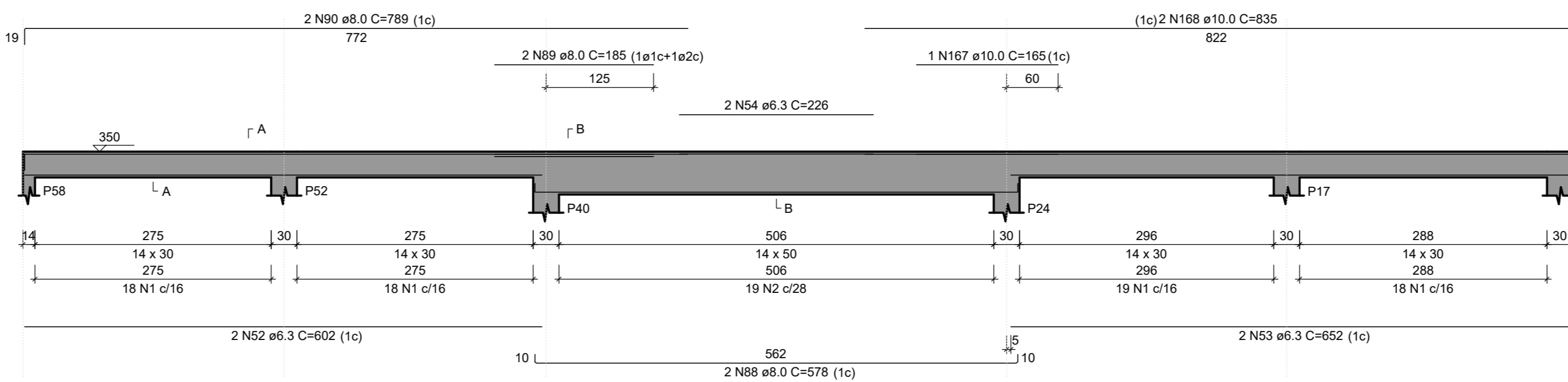
## V32

ESC 1:50



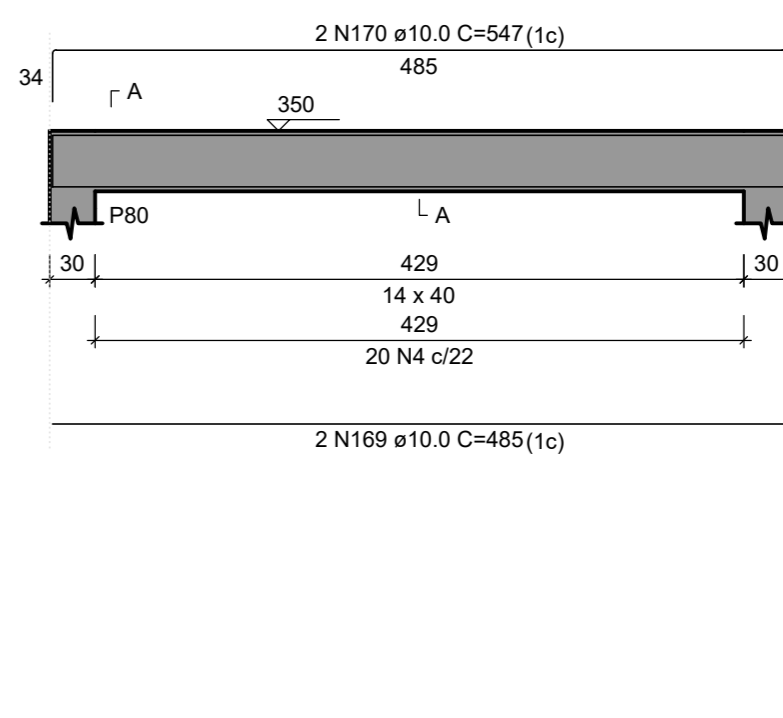
## V33

ESC 1:50



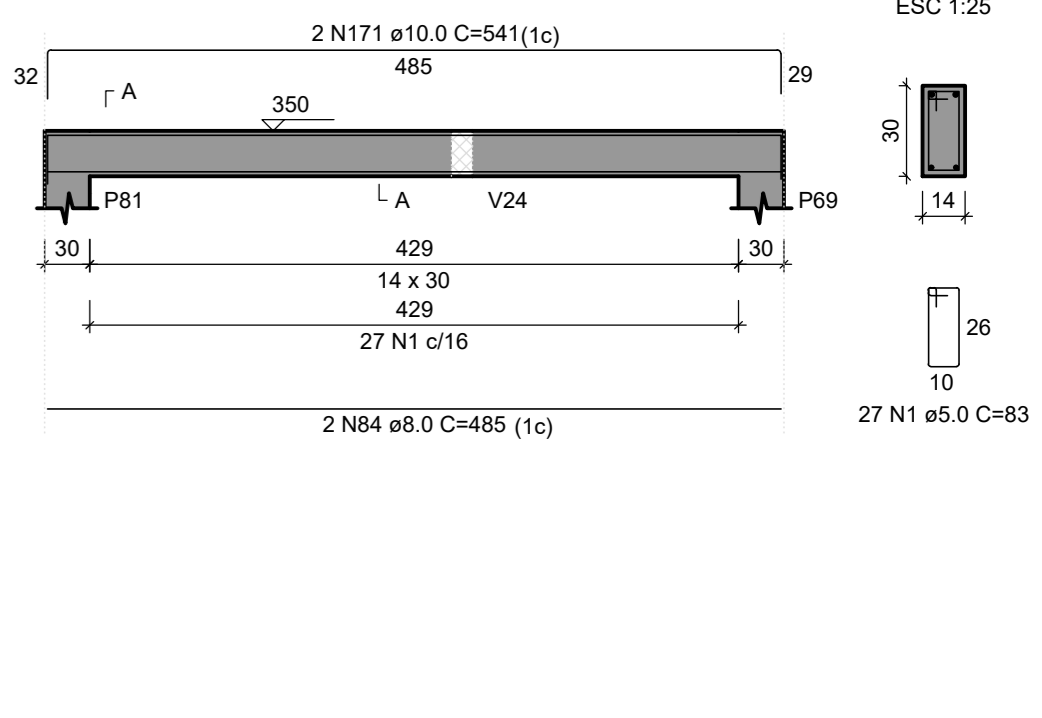
## V34

ESC 1:50



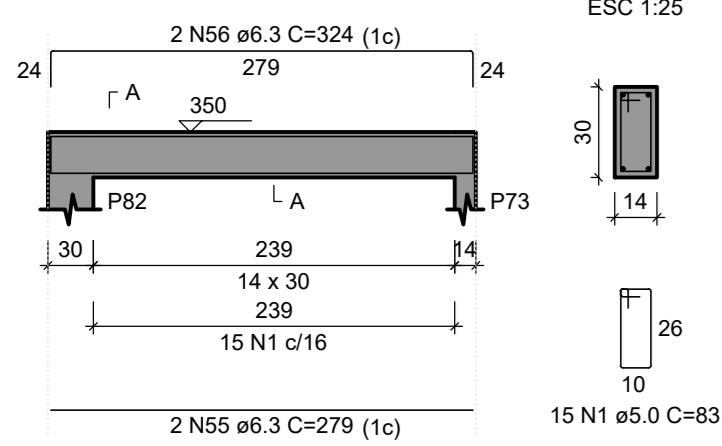
## V35

ESC 1:50



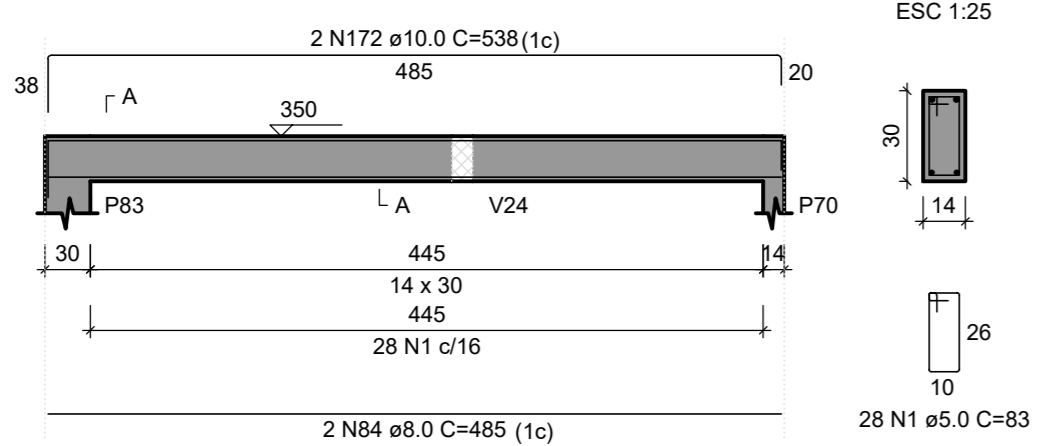
## V36

ESC 1:50



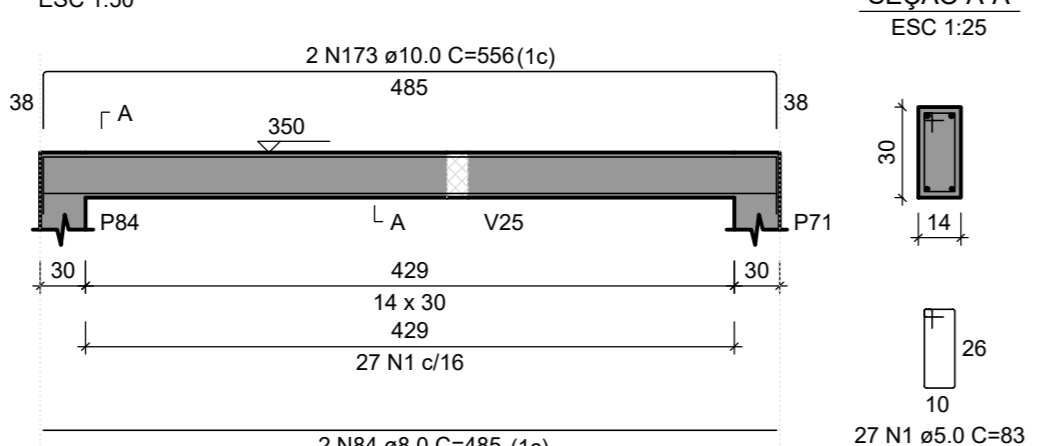
## V37

ESC 1:50



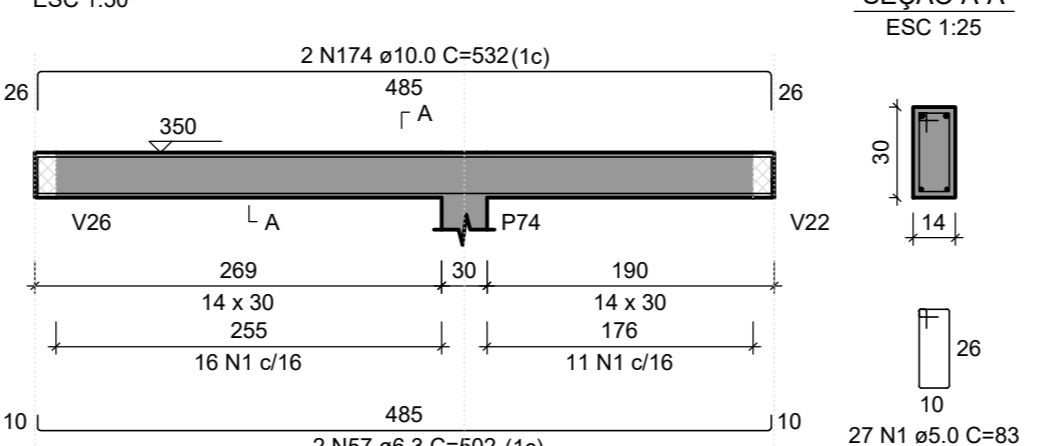
## V38

ESC 1:50



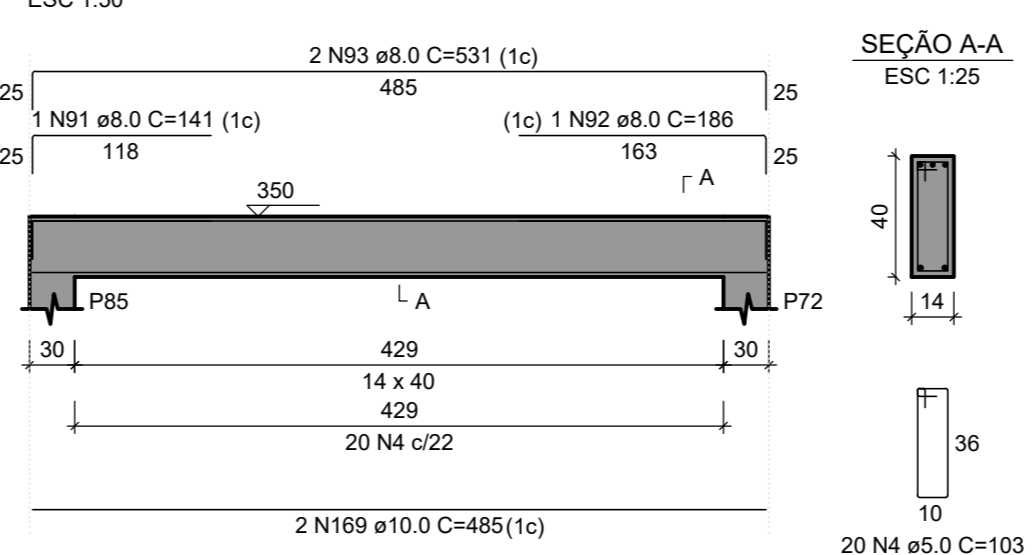
## V39

ESC 1:50



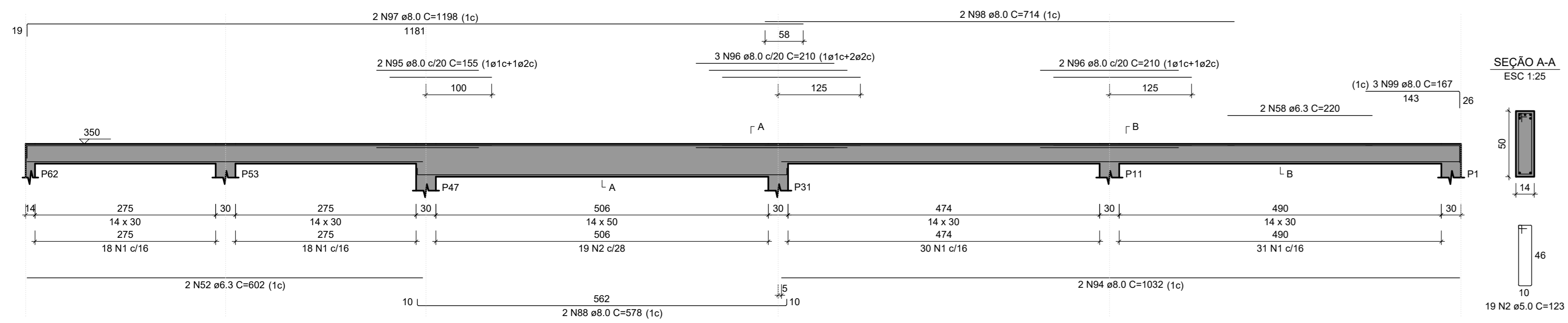
## V40

ESC 1:50



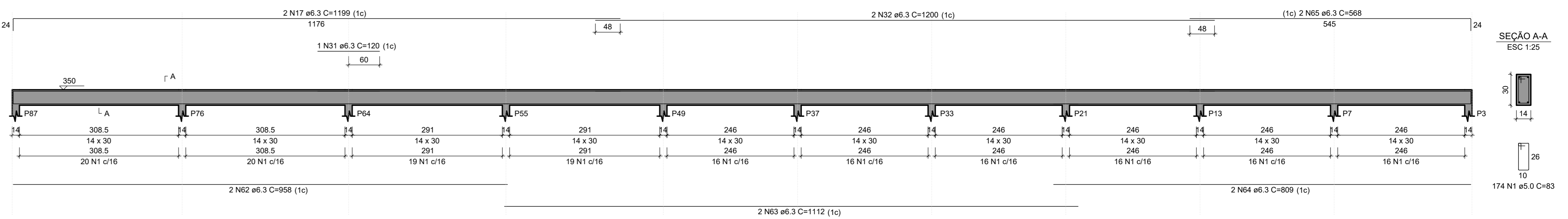
## V41

ESC 1:50



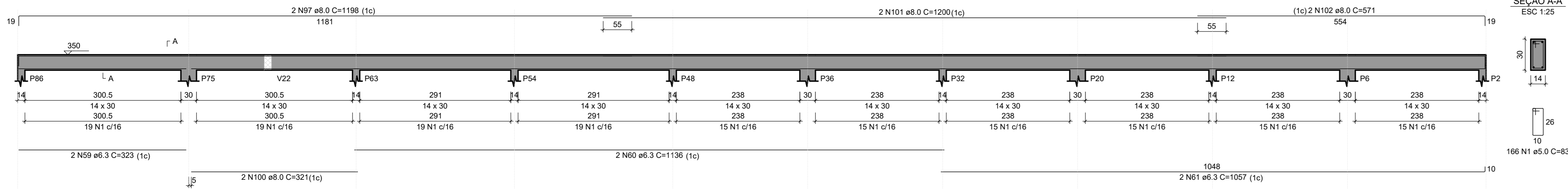
## V43

ESC 1:50



## V42

ESC 1:50



CONTRATADA:	CONTRATANTE:
	
CNPJ Nº: 28.103.870/0001-08 AVENIDA MESTRA FERREIRA, Nº 72A - 1º ANDAR, CIDADE SANTA MARIA MUNICÍPIO CARLOS ODEBRECHT - CEP: 39401-074	CNPJ Nº: 18.017.348/0001-28 RUA ANTONIO MARIA TORRESINO, Nº 43 - CENTRO JURAMENTO/GOIÁS - CEP: 39500-000
RESPONSÁVEL TÉCNICO:	RESPONSÁVEL LEGAL:
GERALDO DIAS FERREIRA JÚNIOR CRM/CAU: 248.842/D - MGC	PREFEITO(A) MUNICIPAL DE JURAMENTO
<b>CONSTRUÇÃO DA CRECHE PROFESSORA ALFREDINA DIAS MOREIRA NO MUNICÍPIO DE JURAMENTO - MG</b>	
DESCRIÇÃO: DETALHAMENTO DE VIGAS AÉREAS.	
ENDEREÇO DA OBRA: AVENIDA SÃO JOÃO, S/N, BAIRRO NENZINHA BORGES, JURAMENTO-MG	
MUNICÍPIO: JURAMENTO/MG	DATA INICIAL: 08 DE OUTUBRO DE 2025
FASE DO PROJETO: INICIAL	ART/RRT:
REFERÊNCIA DO PROJETO: JUR.0153	ESCALA: INDICADAS
Nº REVISÃO: 00	08/12